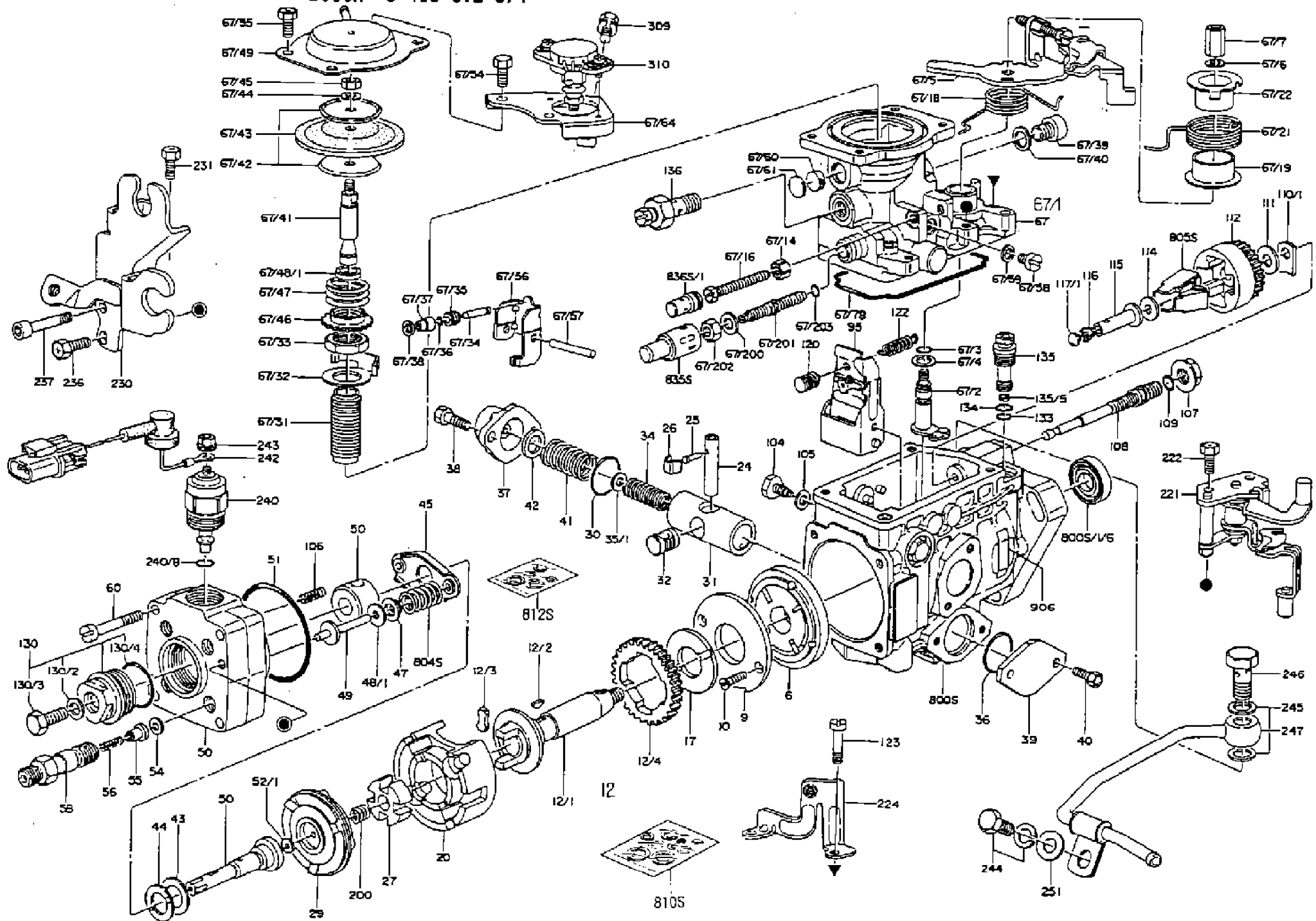


**ZEXEL
COMPONENTS**

Date: 15.02.14
Time: 15:42:32

+ INJECTION-PUMP ASSEMBLY	104740-7102	9 460 612 874	
Manufacturer No.:			
- FUEL-INJECTION PUMP	104640-7102	9 461 622 608	
- NAMEPLATE	146904-5500	9 461 623 159	
-			
-			
-			
- NOZZLE AND HOLDER ASSY.	105148-1121	9 430 613 538	0050B
Nozzle and Holder:	16600-43G03		
Open Pre:MPa(Kgf/cm2):	9.8{100}		
- NOZZLE-HOLDER	105078-0050	9 430 615 042	
- NOZZLE	105007-1130	9 432 610 077	NP-DN0PDN113

ZEXEL 104740-7102 BOSCH 9 460 612 874



104740-7102 9 460 612 874 INJECTION-PUMP ASSEMBLY

Product: 104740-7102 9 460 612 874 INJECTION-PUMP ASSEMBLY

Item	ZEXEL No.	BOSCH No.	Info	Piece	Designation
1/6	146601-0900	9 461 614 046		1	PACKING RING
6	146100-0420	9 461 612 063		1	SUPPLY PUMP
9	146103-0100	9 461 611 411		1	COVER
10	139104-0000	9 411 610 049		2	FLAT-HEAD SCREW
12	146200-0020	9 461 610 101		1	# DRIVE SHAFT
12/1	146200-0000	9 461 610 100		1	DRIVE SHAFT
12/2	146201-0000	9 461 610 107		1	WOODRUFF KEY
12/3	146202-0100	9 461 610 109		2	DAMPER
12/4	146203-0000	9 461 610 110		1	TOOTHED GEAR
17	146204-0000	9 461 610 111		1	PLAIN WASHER
20	146210-2320	9 461 612 064		1	ROLLER SET
24	146303-0000	9 461 610 147		1	BEARING PIN
25	146304-0000	9 461 610 148		1	BEARING PIN
26	146305-0000	9 461 610 149		1	CLAMPING BAND
27	146205-0000	9 461 610 112		1	SLOTTED WASHER
29	146220-0020	9 461 610 119		1	CAM PLATE
30	146600-0800	9 461 610 421		1	O-RING
31	146311-6120	9 461 612 065		1	PUMP PLUNGER
32	146301-0000	9 461 610 138		1	SLIDING PIECE
34	146312-3400	9 461 614 712	A	1	COMPRESSION SPRING
34B	146312-2200	9 461 613 670	A	1	COMPRESSION SPRING
35/1	146690-3200	9 461 612 011	A	1	SHIM:D11.5&9.4T0.1
35/1	146690-3300	9 461 612 012	A	1	SHIM:D11.5&9.4T0.2
35/1	146690-3400	9 461 612 013	A	1	SHIM:D11.5&9.4T0.25
35/1	146690-3500	9 461 612 014	A	1	SHIM:D11.5&9.4T1.0
35/1	146690-4100	9 461 612 015	A	1	SHIM:D11.5&9.4T2
35/1	146690-4200	9 461 612 278	A	1	SHIM:D11.5&9.4T0.5
35/1	146690-4300	9 461 612 279	A	1	SHIM:D11.5&9.4T0.75
36	146600-0800	9 461 610 421		1	O-RING
37	146310-1600	9 461 612 003		1	COVER
38	146620-5000	9 461 612 038		2	BLEEDER SCREW
39	146310-0100	9 461 610 151		1	COVER
40	146620-5000	9 461 612 038		2	BLEEDER SCREW
41	146312-1900	9 461 612 005		1	COMPRESSION SPRING
42	146602-8500	9 461 612 009		1	PLAIN WASHER
43	146230-0000	9 461 610 123		1	SHIM
44	146230-0100	9 461 610 124		1	PLAIN WASHER
45	146231-0001	9 461 614 270		1	SLOTTED WASHER
47	146233-0000	9 461 610 128		2	SLOTTED WASHER
48/1	146603-0000	9 461 610 440	A	1	SHIM:D17.0&5.2T0.50
48/1	146603-0100	9 461 610 441	A	1	SHIM:D17.0&5.2T0.80
48/1	146603-0200	9 461 610 442	A	1	SHIM:D17.0&5.2T1.00
48/1	146603-0300	9 461 610 443	A	1	SHIM:D17.0&5.2T1.20
48/1	146603-0400	9 461 610 444	A	1	SHIM:D17.0&5.2T1.50
48/1	146603-0500	9 461 610 445	A	1	SHIM:D17.0&5.2T1.80
48/1	146603-0600	9 461 610 446	A	1	SHIM:D17.0&5.2T2.00
48/1	146690-1400	9 461 611 329	A	1	SHIM:D17&5.2T0.9
48/1	146690-1500	9 461 611 330	A	1	SHIM:D17&5.2T1.1
48/1	146690-1600	9 461 611 331	A	1	SHIM:D17&5.2T1.3
48/1	146690-1700	9 461 611 332	A	1	SHIM:D17&5.2T1.4
48/1	146690-1800	9 461 611 333	A	1	SHIM:D17&5.2T1.6
48/1	146690-1900	9 461 611 334	A	1	SHIM:D17&5.2T1.7
48/1	146690-5800	9 461 619 110	A	1	SHIM
48/1	146690-5900	9 461 619 111	A	1	SHIM
48/1	146690-6000	9 461 619 112	A	1	SHIM
48/1	146690-6100	9 461 619 113	A	1	SHIM
48/1	146690-6200	9 461 619 114	A	1	SHIM
48/1	146690-6300	9 461 619 115	A	1	SHIM
48/1	146690-6400	9 461 619 116	A	1	SHIM
48/1	146690-6500	9 461 619 117	A	1	SHIM
48/1	146690-6600	9 461 619 118	A	1	SHIM
48/1	146690-6700	9 461 619 119	A	1	SHIM
48/1	146690-6800	9 461 619 120	A	1	SHIM

48/1	146690-6900	9 461 619 121	A	1	SHIM
48/1	146690-7000	9 461 619 122	A	1	SHIM
48/1	146690-7100	9 461 619 123	A	1	SHIM
48/1	146690-7200	9 461 615 908	A	1	SHIM
48/1	146690-7300	9 461 615 909	A	1	SHIM
48/1	146690-7400	9 461 615 910	A	1	SHIM
48/1	146690-7500	9 461 615 911	A	1	SHIM
48/1	146690-7800	9 461 619 124	A	1	SHIM
49	146234-0020	9 461 610 129		2	GUIDE PIN
50	146401-2620	9 461 613 672		1	HYDRAULIC HEAD
51	146600-0000	9 461 610 413		1	O-RING
52/1	146420-0000	9 461 610 177	A	1	SHIM:D9.5&3.0T1.90
52/1	146420-0100	9 461 610 178	A	1	SHIM:D9.5&3.0T1.92
52/1	146420-0200	9 461 610 179	A	1	SHIM:D9.5&3.0T1.94
52/1	146420-0300	9 461 610 180	A	1	SHIM:D9.5&3.0T1.96
52/1	146420-0400	9 461 610 181	A	1	SHIM:D9.5&3.0T1.98
52/1	146420-0500	9 461 610 182	A	1	SHIM:D9.5&3.0T2.00
52/1	146420-0600	9 461 610 183	A	1	SHIM:D9.5&3.0T2.02
52/1	146420-0700	9 461 610 184	A	1	SHIM:D9.5&3.0T2.04
52/1	146420-0800	9 461 610 185	A	1	SHIM:D9.5&3.0T2.06
52/1	146420-0900	9 461 610 186	A	1	SHIM:D9.5&3.0T2.08
52/1	146420-1000	9 461 610 187	A	1	SHIM:D9.5&3.0T2.10
52/1	146420-1100	9 461 610 188	A	1	SHIM:D9.5&3.0T2.12
52/1	146420-1200	9 461 610 189	A	1	SHIM:D9.5&3.0T2.14
52/1	146420-1300	9 461 610 190	A	1	SHIM:D9.5&3.0T2.16
52/1	146420-1400	9 461 610 191	A	1	SHIM:D9.5&3.0T2.18
52/1	146420-1500	9 461 610 192	A	1	SHIM:D9.5&3.0T2.20
52/1	146420-1600	9 461 610 193	A	1	SHIM:D9.5&3.0T2.22
52/1	146420-1700	9 461 610 194	A	1	SHIM:D9.5&3.0T2.24
52/1	146420-1800	9 461 610 195	A	1	SHIM:D9.5&3.0T2.26
52/1	146420-1900	9 461 610 196	A	1	SHIM:D9.5&3.0T2.28
52/1	146420-2000	9 461 610 197	A	1	SHIM:D9.5&3.0T2.30
52/1	146420-2100	9 461 610 198	A	1	SHIM:D9.5&3.0T2.32
52/1	146420-2200	9 461 610 199	A	1	SHIM:D9.5&3.0T2.34
52/1	146420-2300	9 461 610 200	A	1	SHIM:D9.5&3.0T2.36
52/1	146420-2400	9 461 610 201	A	1	SHIM:D9.5&3.0T2.38
52/1	146420-2500	9 461 610 202	A	1	SHIM:D9.5&3.0T2.40
52/1	146420-2600	9 461 610 203	A	1	SHIM:D9.5&3.0T2.42
52/1	146420-2700	9 461 610 204	A	1	SHIM:D9.5&3.0T2.44
52/1	146420-2800	9 461 610 205	A	1	SHIM:D9.5&3.0T2.46
52/1	146420-2900	9 461 610 206	A	1	SHIM:D9.5&3.0T2.48
52/1	146420-3000	9 461 610 207	A	1	SHIM:D9.5&3.0T2.50
52/1	146420-3100	9 461 610 208	A	1	SHIM:D9.5&3.0T2.52
52/1	146420-3200	9 461 610 209	A	1	SHIM:D9.5&3.0T2.54
52/1	146420-3300	9 461 610 210	A	1	SHIM:D9.5&3.0T2.56
52/1	146420-3400	9 461 610 211	A	1	SHIM:D9.5&3.0T2.58
52/1	146420-3500	9 461 610 212	A	1	SHIM:D9.5&3.0T2.60
52/1	146420-3600	9 461 610 213	A	1	SHIM:D9.5&3.0T2.62
52/1	146420-3700	9 461 610 214	A	1	SHIM:D9.5&3.0T2.64
52/1	146420-3800	9 461 610 215	A	1	SHIM:D9.5&3.0T2.66
52/1	146420-3900	9 461 610 216	A	1	SHIM:D9.5&3.0T2.68
52/1	146420-4000	9 461 610 217	A	1	SHIM:D9.5&3.0T2.70
52/1	146420-4100	9 461 610 218	A	1	SHIM:D9.5&3.0T2.72
52/1	146420-4200	9 461 610 219	A	1	SHIM:D9.5&3.0T2.74
52/1	146420-4300	9 461 610 220	A	1	SHIM:D9.5&3.0T2.76
52/1	146420-4400	9 461 610 221	A	1	SHIM:D9.5&3.0T2.78
52/1	146420-4500	9 461 610 222	A	1	SHIM:D9.5&3.0T2.80
52/1	146420-4600	9 461 610 223	A	1	SHIM:D9.5&3.0T2.82
52/1	146420-4700	9 461 610 224	A	1	SHIM:D9.5&3.0T2.84
52/1	146420-4800	9 461 610 225	A	1	SHIM:D9.5&3.0T2.86
52/1	146420-4900	9 461 610 226	A	1	SHIM:D9.5&3.0T2.88
52/1	146420-5000	9 461 610 227	A	1	SHIM:D9.5&3.0T2.90
52/1	146420-5100	9 461 610 228	A	1	SHIM:D9.5&3.0T1.74
52/1	146420-5200	9 461 610 229	A	1	SHIM:D9.5&3.0T1.76
52/1	146420-5300	9 461 610 230	A	1	SHIM:D9.5&3.0T1.78
52/1	146420-5400	9 461 610 231	A	1	SHIM:D9.5&3.0T1.80
52/1	146420-5500	9 461 610 232	A	1	SHIM:D9.5&3.0T1.82
52/1	146420-5600	9 461 610 233	A	1	SHIM:D9.5&3.0T1.84
52/1	146420-5700	9 461 610 234	A	1	SHIM:D9.5&3.0T1.86

52/1	146420-5800	9 461 610 235	A	1	SHIM:D9.5&3.0T1.88
54	146433-0100	9 461 610 239		4	GASKET:D12&6.4T1.00
55	146430-2920	9 413 610 175		4	DELIVERY-VALVE ASSEMBLY
56	146432-0000	9 461 610 238		4	COMPRESSION SPRING
58	146440-0220	9 461 610 241		4	FITTING
60	139106-0100	9 411 610 051		3	FLAT-HEAD SCREW
67	146701-1020	9 461 623 065		1	# MANIFOLD-PRESSURE COMP.
67/1	146805-3620	9 461 617 269		1	GOVERNOR COVER
67/2	146515-0320	9 461 610 267		1	CONTROL SHAFT
67/3	146600-0100	9 461 610 414		1	O-RING
67/4	139310-0200	9 411 610 065		1	PLAIN WASHER
67/5	146536-5320	9 461 613 674	A	1	CONTROL LEVER
67/5B	146536-5420	9 461 613 675	A	1	CONTROL LEVER
67/5C	146830-6720	9 461 615 296	A	1	CONTROL LEVER
67/5D	146830-6820	9 461 615 297	A	1	CONTROL LEVER
67/6	014110-6440	9 442 610 020		1	LOCKING WASHER
67/7	146621-0700	9 461 611 508		1	UNION NUT
67/14	146621-1700	9 461 610 503		1	UNION NUT
67/16	146526-3000	9 461 611 439		1	BLEEDER SCREW
67/18	146592-1800	9 461 613 679		1	COILED SPRING
67/19	146541-3000	9 461 610 319		1	BUSHING
67/21	146587-0800	9 461 610 403		1	COILED SPRING
67/22	146541-3100	9 461 610 320		1	SLOTTED WASHER
67/31	146710-0800	9 461 611 236		1	BUSHING
67/32	146711-0000	9 461 610 554		1	PLATE
67/33	139218-0400	9 411 610 060		1	UNION NUT
67/34	146712-0700	9 461 611 031		1	BEARING PIN
67/35	146621-0300	9 461 610 502		1	UNION NUT
67/36	146600-1400	9 461 610 426		1	O-RING
67/37	146710-0100	9 461 610 553		1	BUSHING
67/38	139506-0200	9 411 610 073		1	GASKET:D8.9&6.8T1.00
67/39	146620-0300	9 461 610 498		1	CAPSULE
67/40	026512-1540	9 442 610 044		1	GASKET:D15.4&12.2T1.50
67/41	146713-4100	9 461 615 286		1	ADJUSTING PIN
67/42	146714-0000	9 461 610 558		2	PLATE
67/43	146715-0000	9 461 610 559		1	DIAPHRAGM
67/44	139306-0100	9 411 610 061		1	LOCKING WASHER
67/45	013030-6040	9 442 610 012		1	UNION NUT:M6P1H3.6
67/46	146716-0000	9 461 610 560		1	UNION NUT
67/47	146717-1400	9 461 611 819		1	COILED SPRING
67/48/1	146720-0000	9 461 610 563	A	1	SPACER BUSHING:L3.7
67/48/1	146720-0100	9 461 610 564	A	1	SPACER BUSHING:L3.9
67/48/1	146720-0200	9 461 610 565	A	1	SPACER BUSHING:L4.1
67/48/1	146720-0300	9 461 610 566	A	1	SPACER BUSHING:L4.3
67/48/1	146720-0400	9 461 610 567	A	1	SPACER BUSHING:L4.5
67/48/1	146720-0500	9 461 610 568	A	1	SPACER BUSHING:L4.7
67/48/1	146720-0600	9 461 610 569	A	1	SPACER BUSHING:L4.9
67/48/1	146720-0700	9 461 610 570	A	1	SPACER BUSHING:L5.1
67/48/1	146720-0800	9 461 610 571	A	1	SPACER BUSHING:L5.3
67/48/1	146720-0900	9 461 610 572	A	1	SPACER BUSHING:L2.7
67/48/1	146720-1000	9 461 610 573	A	1	SPACER BUSHING:L2.9
67/48/1	146720-1100	9 461 610 574	A	1	SPACER BUSHING:L3.1
67/48/1	146720-1200	9 461 610 575	A	1	SPACER BUSHING:L3.3
67/48/1	146720-1300	9 461 610 576	A	1	SPACER BUSHING:L3.5
67/48/1	146720-1400	9 461 610 577	A	1	SPACER BUSHING:L2.8
67/48/1	146720-1500	9 461 610 578	A	1	SPACER BUSHING:L3.0
67/48/1	146720-1600	9 461 610 579	A	1	SPACER BUSHING:L3.2
67/48/1	146720-1700	9 461 610 580	A	1	SPACER BUSHING:L3.4
67/48/1	146720-1800	9 461 610 581	A	1	SPACER BUSHING:L3.6
67/48/1	146720-1900	9 461 610 582	A	1	SPACER BUSHING:L3.8
67/48/1	146720-2000	9 461 610 583	A	1	SPACER BUSHING:L4.0
67/48/1	146720-2100	9 461 610 584	A	1	SPACER BUSHING:L4.2
67/48/1	146720-2200	9 461 610 585	A	1	SPACER BUSHING:L4.4
67/48/1	146720-2300	9 461 610 586	A	1	SPACER BUSHING:L4.6
67/48/1	146720-2400	9 461 610 587	A	1	SPACER BUSHING:L4.8
67/48/1	146720-2500	9 461 610 588	A	1	SPACER BUSHING:L5.0
67/48/1	146720-2600	9 461 610 589	A	1	SPACER BUSHING:L5.2
67/48/1	146720-2700	9 461 610 590	A	1	SPACER BUSHING:L5.4
67/48/1	146720-2800	9 461 610 591	A	1	SPACER BUSHING:L5.5

67/48/1	146720-2900	9 461 610 592	A	1	SPACER BUSHING:L5.6
67/48/1	146720-4500	9 461 611 033	A	1	SPACER BUSHING:L1.8
67/48/1	146720-4600	9 461 611 034	A	1	SPACER BUSHING:L1.9
67/48/1	146720-4700	9 461 611 035	A	1	SPACER BUSHING:L2.0
67/48/1	146720-4800	9 461 611 036	A	1	SPACER BUSHING:L2.1
67/48/1	146720-4900	9 461 611 037	A	1	SPACER BUSHING:L2.2
67/48/1	146720-5000	9 461 611 038	A	1	SPACER BUSHING:L2.3
67/48/1	146720-5100	9 461 611 039	A	1	SPACER BUSHING:L2.4
67/48/1	146720-5200	9 461 611 040	A	1	SPACER BUSHING:L2.5
67/48/1	146720-5300	9 461 611 041	A	1	SPACER BUSHING:L2.6
67/48/1	146725-2500	9 461 614 256	A	1	SPACER BUSHING:L5.7
67/48/1	146725-2600	9 461 614 257	A	1	SPACER BUSHING:L5.8
67/48/1	146725-2700	9 461 614 258	A	1	SPACER BUSHING:L5.9
67/48/1	146725-2800	9 461 614 259	A	1	SPACER BUSHING:L6.0
67/48/1	146725-2900	9 461 614 260	A	1	SPACER BUSHING:L6.1
67/48/1	146725-3000	9 461 614 261	A	1	SPACER BUSHING:L6.2
67/48/1	146725-3100	9 461 614 262	A	1	SPACER BUSHING:L6.3
67/48/1	146725-3200	9 461 614 263	A	1	SPACER BUSHING:L6.4
67/48/1	146725-3300	9 461 614 264	A	1	SPACER BUSHING:L6.5
67/48/1	146725-3400	9 461 614 265	A	1	SPACER BUSHING:L6.6
67/48/1	146725-3500	9 461 614 266	A	1	SPACER BUSHING:L6.7
67/48/1	146725-3600	9 461 614 267	A	1	SPACER BUSHING:L6.8
67/48/1	146725-3700	9 461 614 268	A	1	SPACER BUSHING:L6.9
67/48/1	146725-3800	9 461 614 269	A	1	SPACER BUSHING:L7.0
67/48/1	146725-3900	9 461 617 846	A	1	SPACER BUSHING:L7.1
67/48/1	146725-4000	9 461 617 847	A	1	SPACER BUSHING:L7.2
67/48/1	146725-4100	9 461 617 848	A	1	SPACER BUSHING:L7.3
67/48/1	146725-4200	9 461 617 849	A	1	SPACER BUSHING:L7.4
67/48/1	146725-4300	9 461 617 850	A	1	SPACER BUSHING:L7.5
67/49	146721-2520	9 461 613 685		1	COVER
67/54	139006-4600	9 411 610 667		2	BLEEDER SCREW
67/55	139006-4500	9 411 610 554		2	BLEEDER SCREW
67/56	146723-0300	9 461 613 001		1	CONTROL LEVER
67/57	146712-0100	9 461 610 556		1	BEARING PIN
67/58	146620-0600	9 461 610 500		2	CAPSULE
67/59	026506-1040	9 421 617 011		2	GASKET:D9.9&6.2T1
67/60	146724-0300	9 461 611 260		1	ELEMENT
67/61	146724-0600	9 461 611 262		1	CAPSULE
67/64	146927-2300	9 461 613 692		1	BRACKET
67/78	146600-4400	9 461 615 663		1	SEAL RING
67/200	139308-0300	9 411 610 063		1	PLAIN WASHER
67/201	146545-3400	9 461 612 181	A	1	THREADED PIN:L53.00
67/201B	146545-3500	9 461 612 182	A	1	THREADED PIN:L55.00
67/201C	146545-3600	9 461 612 183	A	1	THREADED PIN:L57.00
67/202	139208-0900	9 411 610 627		1	UNION NUT
67/203	146600-1200	9 461 610 424		1	O-RING
95	146551-6920	9 461 613 268		1	FULCRUM LEVER
104	146568-0000	9 461 610 342		2	SLOTTED SPRING PIN
105	026508-1140	0 986 613 069		2	GASKET:D11.4&8.2T1
106	146588-0500	9 461 611 663		2	COILED SPRING
107	146569-0300	9 461 612 031		1	UNION NUT
108	146570-0100	9 461 610 346		1	GOVERNOR SHAFT
109	146600-0400	9 461 610 417		1	O-RING
110/1	146571-0000	9 461 610 348	A	1	SHIM:D20.2&8.3T1.05
110/1	146571-0100	9 461 610 349	A	1	SHIM:D20.2&8.3T1.25
110/1	146571-0200	9 461 610 350	A	1	SHIM:D20.2&8.3T1.45
110/1	146571-0300	9 461 610 351	A	1	SHIM:D20.2&8.3T1.65
110/1	146571-0400	9 461 610 352	A	1	SHIM:D20.2&8.3T1.85
110/1	146571-0500	9 461 610 353	A	1	SHIM:D20.2&8.3T1.15
110/1	146571-0600	9 461 610 354	A	1	SHIM:D20.2&8.3T1.35
110/1	146571-0700	9 461 610 355	A	1	SHIM:D20.2&8.3T1.55
110/1	146571-0800	9 461 610 356	A	1	SHIM:D20.2&8.3T1.75
111	146602-0600	9 461 610 437		1	PLAIN WASHER:D20&8.4T1.40
112	146572-0020	9 461 610 357		1	FLYWEIGHT ASSEMBLY
114	146602-0500	9 461 610 436		1	PLAIN WASHER:D17&6.4T1.60
115	146575-2000	9 461 610 848		1	SLIDING SLEEVE
116	146576-0200	9 461 610 851		1	CAP
117/1	146577-0000	9 461 610 365	A	1	PLUG:L1.70
117/1	146577-0100	9 461 610 366	A	1	PLUG:L1.90

117/1	146577-0200	9 461 610 367	A	1	PLUG:L2.10
117/1	146577-0300	9 461 610 368	A	1	PLUG:L2.30
117/1	146577-0400	9 461 610 369	A	1	PLUG:L2.50
117/1	146577-0500	9 461 610 370	A	1	PLUG:L2.70
117/1	146577-0600	9 461 610 371	A	1	PLUG:L2.90
117/1	146577-0700	9 461 610 372	A	1	PLUG:L3.10
117/1	146577-0800	9 461 610 373	A	1	PLUG:L3.30
117/1	146577-0900	9 461 610 374	A	1	PLUG:L3.50
117/1	146577-1000	9 461 610 375	A	1	PLUG:L3.70
117/1	146577-1100	9 461 610 376	A	1	PLUG:L3.90
117/1	146577-1200	9 461 610 377	A	1	PLUG:L4.10
117/1	146577-1300	9 461 610 378	A	1	PLUG:L4.30
117/1	146577-1400	9 461 610 379	A	1	PLUG:L4.50
117/1	146577-1500	9 461 610 380	A	1	PLUG:L4.70
117/1	146577-1600	9 461 610 381	A	1	PLUG:L4.90
117/1	146577-1700	9 461 610 382	A	1	PLUG:L5.10
117/1	146577-5000	9 461 611 384	A	1	PLUG:L1.8
117/1	146577-5100	9 461 611 385	A	1	PLUG:L2.0
117/1	146577-5200	9 461 611 386	A	1	PLUG:L2.2
117/1	146577-5300	9 461 611 387	A	1	PLUG:L2.4
117/1	146577-5400	9 461 611 388	A	1	PLUG:L2.6
117/1	146577-5500	9 461 611 389	A	1	PLUG:L2.8
117/1	146577-5600	9 461 611 390	A	1	PLUG:L3.0
117/1	146577-5700	9 461 611 391	A	1	PLUG:L3.2
117/1	146577-5800	9 461 611 392	A	1	PLUG:L3.4
117/1	146577-5900	9 461 611 393	A	1	PLUG:L3.6
117/1	146577-6000	9 461 611 394	A	1	PLUG:L3.8
117/1	146577-6100	9 461 611 395	A	1	PLUG:L4.0
117/1	146577-6200	9 461 611 396	A	1	PLUG:L4.2
117/1	146577-6300	9 461 611 397	A	1	PLUG:L4.4
117/1	146577-6400	9 461 611 398	A	1	PLUG:L4.6
117/1	146577-6500	9 461 611 399	A	1	PLUG:L4.8
117/1	146577-6600	9 461 611 400	A	1	PLUG:L5.0
117/1	146877-0400	9 461 615 002	A	1	PLUG
117/1	146877-0500	9 461 615 003	A	1	PLUG
117/1	146877-0600	9 461 615 004	A	1	PLUG
117/1	146877-0700	9 461 615 005	A	1	PLUG
117/1	146877-4300	9 461 616 280	A	1	PLUG
117/1	146877-4400	9 461 616 281	A	1	PLUG
117/1	146877-4500	9 461 616 282	A	1	PLUG
117/1	146877-4600	9 461 616 283	A	1	PLUG
120	146579-6020	9 461 613 288		1	RETAINING PIN
122	146580-0400	9 461 612 241		1	GOVERNOR SPRING
123	146620-0500	9 461 610 499		4	HEX-SOCKET-HEAD CAP SCREW
130	146421-0020	9 461 610 236		1	# CAPSULE
130/2	026508-1140	0 986 613 069		1	GASKET:D11.4&8.2T1
130/3	146422-0000	9 461 610 237		1	BLEEDER SCREW
130/4	146600-0500	9 461 610 418		1	O-RING
133	146600-0600	9 461 610 419		1	O-RING
134	146600-0700	9 461 610 420		1	O-RING
135	146110-0520	9 461 610 687		1	# CONTROL VALVE
135/5	146114-0000	9 461 610 094		1	SPRING WASHER
136	146120-0120	9 461 610 096		1	OVER FLOW VALVE
200	146206-0100	9 461 610 113		1	COILED SPRING
221	146927-2620	9 461 613 693		1	BRACKET
222	139006-4600	9 411 610 667		2	BLEEDER SCREW
224	146927-2700	9 461 613 694		1	BRACKET
230	146926-4220	9 461 613 484		1	BRACKET
231	139006-4600	9 411 610 667		1	BLEEDER SCREW
236	139006-4800	9 411 610 556		1	BLEEDER SCREW
237	146620-0200	9 461 610 497		1	HEX-SOCKET-HEAD CAP SCREW
240	146650-1220	9 461 610 533		1	# PULLING ELECTROMAGNET
240/8	146600-1700	9 461 610 427		1	O-RING
242	146658-6120	9 461 613 476		1	WIRE
243	146621-1000	9 461 611 665		1	UNION NUT
244	020118-1440	9 442 610 672		1	BLEEDER SCREW
245	026512-1840	9 442 610 045		2	GASKET:D17.9&12.2T1.50
246	027412-2440	9 442 610 048		1	EYE BOLT
247	146608-3320	9 461 613 474		1	PIPE

251	014010-8140	9 442 610 015		1	PLAIN WASHER:D18&8.5T1.6
309	139006-5700	9 461 613 665		1	BLEEDER SCREW
310	146673-8120	9 461 613 683		1	POTENTIOMETER
800S	146019-4420	9 460 610 283		1	PUMP HOUSING
800S/1/6	146601-0900	9 461 614 046		1	PACKING RING
804S	146232-0320	9 461 610 127		1	COMPRESSION SPRING
805S	146574-0120	9 461 610 358		1	PARTS SET
810S	146600-1120	9 461 610 423		1	REPAIR SET
812S	146600-1920	9 461 610 429		1	PARTS SET
835S	146598-1000	9 461 612 195		1	CAP
836S/1	146598-0600	9 461 612 191	A	1	CAP:L18
836S/1	146598-0700	9 461 612 192	A	1	CAP:L21
836S/1	146598-0800	9 461 612 193	A	1	CAP:L24
836S/1	146598-0900	9 461 612 194	A	1	CAP:L27
906	146904-5500	9 461 623 159		1	NAMEPLATE
